



**AGENDA
TOWN OF JUPITER
ENVIRONMENTAL TASKFORCE MEETING
TOWN HALL COMMUNITY ROOM
MONDAY, DECEMBER 2, 2024
6:00 PM**

Call To Order

ROLL CALL

Chair Willie Puz (At Large)
Vice-Chair Christa Cherry
Christina Akly
Elizabeth Summers
Anne Shoffner
Emily O'Mahoney (At Large)
Jill Watson (ALT)
Paul Kabalin (ALT)

CITIZEN COMMENTS

All Non-agenda items are limited to three (3) minutes. Anyone wishing to speak is asked to go to the podium and state his/her name and address for the record. **The Task Force will not discuss these items this evening.**

MINUTES

1. October 28, 2025 ETF Meeting Minutes

PUBLIC BUSINESS

2. Street Tree Management Plan Update
3. Centennial Celebration - Sponsors & Volunteer Needs

Task Force Member Comments

Staff Updates

4. Living Shoreline Projects, Sims Creek Preserve & Jupiter Jubilee

5. Next tentatively scheduled meeting Monday, February 24, 2025 at 6:00 p.m. at
Town Hall Community Room

ADJOURNMENT



**AGENDA
TOWN OF JUPITER
ENVIRONMENTAL TASK FORCE (ETF)
TOWN HALL COMMUNITY ROOM
October 28, 2024
6:00 PM**

Call to Order

ROLL CALL:

Chair Willie Puz	<input checked="" type="checkbox"/>	Member Beth Summers	<input checked="" type="checkbox"/>
Vice- Chair Christina Akly	<input checked="" type="checkbox"/>	Member Paul Kabalin (Alt)	<input type="checkbox"/>
Member Christa Cherry	<input checked="" type="checkbox"/>	Member Jill Watson (Alt)	<input checked="" type="checkbox"/>
Member Emily O'Mahoney	<input checked="" type="checkbox"/>	Vacant	<input type="checkbox"/>
Member Anne Shoffner	<input checked="" type="checkbox"/>		

Staff Liaisons: Barrett Cruce, Natural Resources Supervisor
Stephanie A. Thoburn, Asst. Director of Planning and Zoning

CITIZEN COMMENTS

All non-agenda items are limited to three (3) minutes. Anyone wishing to speak is asked to go to the podium and state his/her name and address for the record. **The Task Force will not discuss these items this evening.**

No comments submitted

MINUTES

Approval of the July 22, 2024 ETF Meeting Minutes [Attachment 1]

Minutes were approved with no changes

Motion to approve: Jill Watson

Second: Christina Akly

Member Emily O'Mahoney abstained

PUBLIC BUSINESS

- Jonathan Dickinson State Park- Letter from Town Council [Attachment 2]
Staff provided a brief update regarding the letter from Town Council that was sent to Tallahassee.

Anne: Does the amendment have any impact on how they will use this land in the future? Staff advised that the Town cannot make a comment necessarily on this

topic. Chair Puz provided some insight that he has heard on the topic and advised when the next legislative session begins.

Anne asked why this letter came to fruition? Staff advised that this is a stance the Council took. Chair Puz discussed the citizen comments from the Council meeting where it was requested by citizens to have Council provide a letter to the State.

2. NOAA Transformational Habitat Restoration and Coastal Resilience Grant – Letter of Support [Attachment 3]

Staff, Ashley Reeves, provided an updated and status of the grant. Advised that this will be our third attempt. Staff has requested the task force review the draft letter of support.

O'Mahoney asked if we have received the grant in the past?

Anne: Did the Town ask why they were rejected?

Ashley confirmed the Town has received feedback and met with the Town's regional coordinator to discuss what is needed.

Puz asked if the Town would need to submit the initial letter and then additional letters to enhance the chance to receive this grant. Staff advised that there is a limit on pages to be submitted, but additional letters can be submitted as attachments.

O'Mahoney discussed the living shoreline upland update as it relates to the different artifacts discovered. She wanted to clarify that the Town is preserving these findings and this argument be considered to be used during the application process.

Anne stated that the argument needs to be recognizing the importance of not disturbing archaeological finds while still preserving the upland and living shoreline.

Staff advised that there is not a time constraint as of yet, dates are expected to be announced later this year.

O'Mahoney suggested that the letter for support include all the Environmental task force members names and titles for their work in the industry. Anne volunteered to help draft and prep the application with the caveat that she would need to review the application requirements and design plans.

3. Centennial Natural Environment Committee Workshop – discussion of ETF member event participation and engagement [Attachment 4]

Staff introduced Jocelyn O'Neil (LRD) and Cami Cunningham (JID), members of the Centennial Committee.

Staff provided a brief update for those members that were not at the last meeting. Staff is looking for the task force to be involved with the different events that the Town will be hosting.

Staff requested the task force opinion on two open spaces to showcase for the centennial year. Chair Puz suggested that the task force consider the overall connectivity and accessibility.

Akly brought to Staff's attention that the Town's website does not have the Town's open spaces listed on the Town's website and it is not easily accessible. Staff is aware and will be fixing the issue and update the task force once this has been completed. Multiple task force members suggested updates to the open space webpage to include easier access and pictures.

Task force agreed to highlight Hammock and Delaware open spaces for next year's celebration.

Staff discussed the Natural History Bus Tours, presentation and panels, beach cleanup, arbor day celebration, and paddleboard / waterway cleanup programs and request task force member involvement at each event. **List the dates, times and needs for each of the events. **be clear to explain what the ask is for these events ** Staff to send out the PowerPoint presentation to the task force.**

Akly suggested reaching out to some of the book authors that have written historical books about the area to include on the panels/presentations.

Staff will be sending an email for sponsorships and include a list of the items that need to be sponsored for this specific task force.

O'Mahoney reached out to Kate Pokorny and is waiting for a response. Staff will reach out and follow up.

4. Vulnerability Assessment Update

Staff confirmed Utilities has started the process for the assessment and advised that it will take roughly a year. Once it has been completed Utilities will attend an ETF meeting to present the findings.

5. Task Force Member comments

Beth Summers asked what is the expectation for task force members to attend the different centennial events. Ashley provided a brief explanation of expectations and confirmed she will be sending more detail in the list that will be email out to the task force.

6. Staff comments

Barrett advised that he reached out to Parks and PW regarding the request for the glyphosate testing. This is currently not part of the Town's maintenance, but our new landscaping contract will begin testing. Staff will provide the results once we receive them.

7. Next meeting December 2, 2024 at 6:00 p.m. at Town Hall Community Room

ADJOURNMENT



Environmental Task
Force Meeting
December 2, 2024

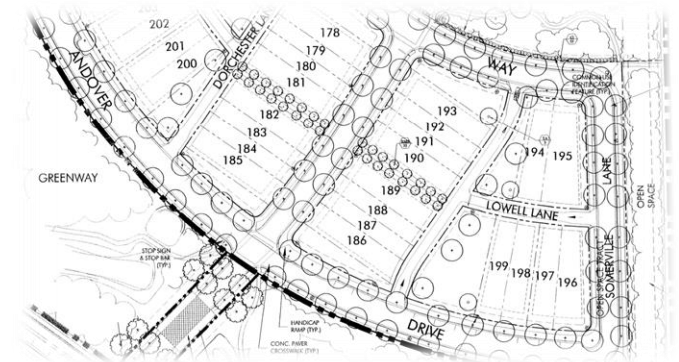
TOWN OF JUPITER

Street Tree Management Plan



Background & History

- Primary purpose of the Environmental Task Force (ETF), per Resolution 31-19, is to address tree preservation
- Most neighborhoods have an approved landscape plan that includes street trees
- Trees promote shade, improve neighborhood appearance, increase property values, reduce temperatures and assist with stormwater management
- Street trees can cause conflicts with sidewalks, infrastructure and utilities as they grow in size
- In 2017, The ETF reviewed the Street Tree Management Plan Guide, and made recommendations to the Town Council



A Balancing Act

- Balance between the need to keep and maintain trees for their benefits, while also minimizing conflicts and maintenance costs.
- Need to repair sidewalks/infrastructure while managing and maintaining street trees
- Neighborhood interests and concerns (character of neighborhood vs. infrastructure)



The Street Tree Study



- Commissioned by the Town with focus on managing sidewalk repairs and infrastructure
- Studied six communities
 - Inventory of street trees (approximate age, size, species)
 - Inventory of infrastructure and conflicts
- Goal of the study was to provide a guide for associations/residents to make informed decisions and provide a process for making changes to street tree plans

Community Street Tree Management Plan

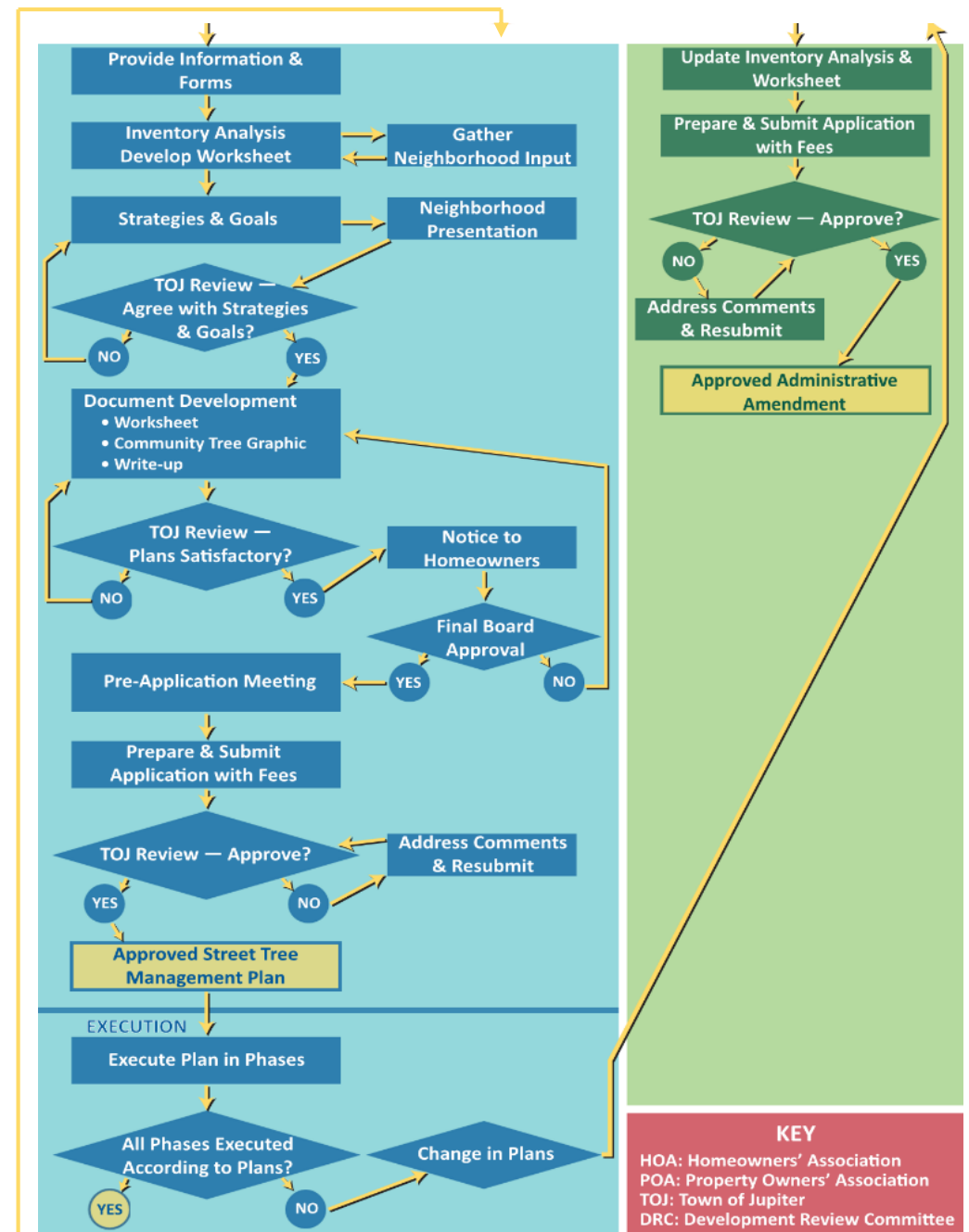
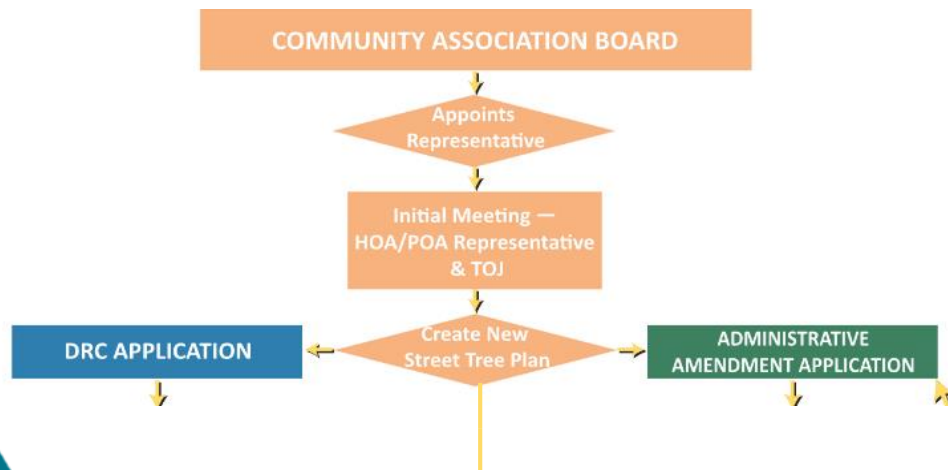


- Creation of a single document to aid associations/residents when creating a Street Tree Management Plan
- Multiple options available to assist in the formulation of solutions
- Consideration of examples and resources provided saves time and reduces costs
- One-time approval as a Site Plan Amendment provides for future management and guidance as the community implements the approved plan.



Changing the Approved Street Tree Plan

- Collaborative effort between the HOA and the Town
- Requires neighborhood outreach for major changes
- Administrative process allows for expedient approval
- TRAQ qualified, ISA certified arborist on Town staff reviews all plans



KEY
 HOA: Homeowners' Association
 POA: Property Owners' Association
 TOJ: Town of Jupiter
 DRC: Development Review Committee



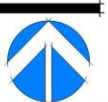
Site Specific Solutions

Solutions

- Root prune/replace sidewalk
- Narrow/relocate sidewalk
- Use of flexible pavement or alternative materials
- Sidewalk bridging
- Remove and replace with different species
- Install root barrier
- Cyclical removal and replacement of trees with the same species

**Common issue-
Sidewalk lift &
Infrastructure conflicts**

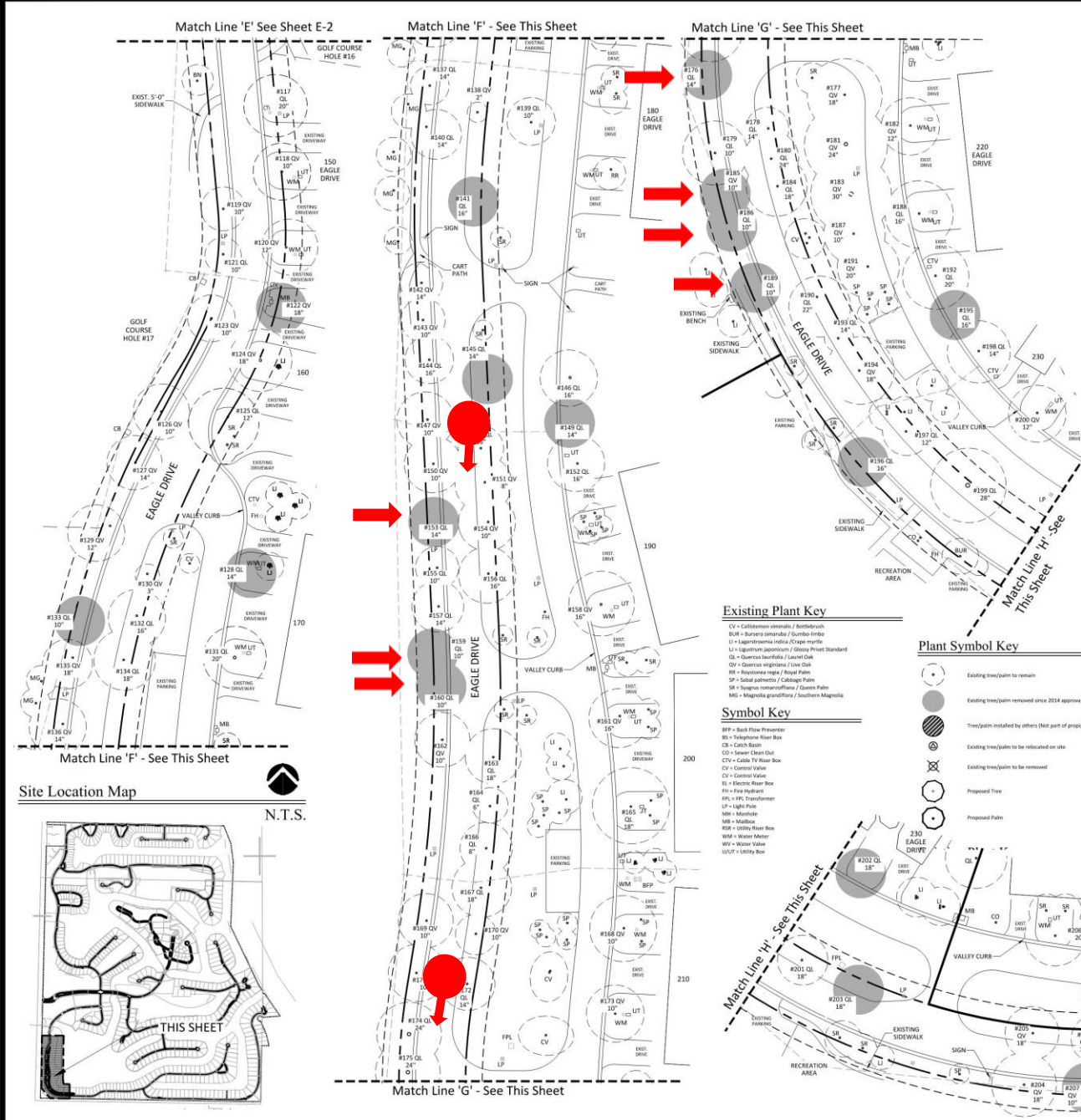




Tree Assessment Table (Sheet E-3)

TREE #	SPECIES	ANALYSIS	RECOMMENDATION
117	Quercus laevis / Laurel Oak	OK	Routine maintenance
118	Quercus virginiana / Live Oak	OK	Routine maintenance
119	Quercus virginiana / Live Oak	"V" canopies	Watch for trunk splitting
120	Quercus virginiana / Live Oak	OK	Routine maintenance
121	Quercus laevis / Laurel Oak	OK	Remove
122	Quercus virginiana / Live Oak	OK	Routine maintenance
123	Quercus virginiana / Live Oak	OK	Routine maintenance
124	Quercus virginiana / Live Oak	OK	Routine maintenance
125	Quercus virginiana / Live Oak	OK	Routine maintenance
126	Quercus virginiana / Live Oak	OK	Routine maintenance
127	Quercus virginiana / Live Oak	"V" canopies, weak growth	Watch for trunk splitting
128	Quercus virginiana / Live Oak	"V" canopies	Watch for trunk splitting
129	Quercus virginiana / Live Oak	OK	Routine maintenance
130	Quercus virginiana / Live Oak	OK	Routine maintenance
131	Quercus virginiana / Live Oak	OK	Routine maintenance
132	Quercus virginiana / Live Oak	OK	Routine maintenance
133	Quercus laevis / Laurel Oak	OK	Routine maintenance
134	Quercus virginiana / Live Oak	OK	Routine maintenance
135	Quercus virginiana / Live Oak	OK	Routine maintenance
136	Quercus virginiana / Live Oak	OK	Routine maintenance
137	Quercus virginiana / Live Oak	OK	Routine maintenance
138	Quercus virginiana / Live Oak	OK	Routine maintenance
139	Quercus virginiana / Live Oak	OK	Routine maintenance
140	Quercus virginiana / Live Oak	OK	Routine maintenance
141	Quercus virginiana / Live Oak	OK	Routine maintenance
142	Quercus virginiana / Live Oak	"V" canopies	Watch for trunk splitting
143	Quercus virginiana / Live Oak	"V" canopies	Watch for trunk splitting
144	Quercus virginiana / Live Oak	OK	Routine maintenance
145	Quercus virginiana / Live Oak	OK	Routine maintenance
146	Quercus laevis / Laurel Oak	OK	Routine maintenance
147	Quercus virginiana / Live Oak	OK	Routine maintenance
148	Quercus virginiana / Live Oak	OK	Routine maintenance
149	Quercus virginiana / Live Oak	OK	Routine maintenance
150	Quercus virginiana / Live Oak	OK	Routine maintenance
151	Quercus virginiana / Live Oak	OK	Routine maintenance
152	Quercus virginiana / Live Oak	OK	Routine maintenance
153	Quercus virginiana / Live Oak	OK	Routine maintenance
154	Quercus virginiana / Live Oak	OK	Routine maintenance
155	Quercus virginiana / Live Oak	OK	Routine maintenance
156	Quercus virginiana / Live Oak	OK	Routine maintenance
157	Quercus virginiana / Live Oak	OK	Routine maintenance
158	Quercus virginiana / Live Oak	OK	Routine maintenance
159	Quercus virginiana / Live Oak	OK	Routine maintenance
160	Quercus virginiana / Live Oak	OK	Routine maintenance
161	Quercus virginiana / Live Oak	OK	Routine maintenance
162	Quercus virginiana / Live Oak	OK	Routine maintenance
163	Quercus virginiana / Live Oak	OK	Routine maintenance
164	Quercus virginiana / Live Oak	OK	Routine maintenance
165	Quercus virginiana / Live Oak	OK	Routine maintenance
166	Quercus virginiana / Live Oak	OK	Routine maintenance
167	Quercus virginiana / Live Oak	OK	Routine maintenance
168	Quercus virginiana / Live Oak	OK	Routine maintenance
169	Quercus virginiana / Live Oak	OK	Routine maintenance
170	Quercus virginiana / Live Oak	OK	Routine maintenance
171	Quercus virginiana / Live Oak	OK	Routine maintenance
172	Quercus virginiana / Live Oak	OK	Routine maintenance
173	Quercus virginiana / Live Oak	OK	Routine maintenance
174	Quercus virginiana / Live Oak	OK	Routine maintenance
175	Quercus virginiana / Live Oak	OK	Routine maintenance
176	Quercus virginiana / Live Oak	OK	Routine maintenance
177	Quercus virginiana / Live Oak	OK	Routine maintenance
178	Quercus virginiana / Live Oak	OK	Routine maintenance
179	Quercus virginiana / Live Oak	OK	Routine maintenance
180	Quercus virginiana / Live Oak	OK	Routine maintenance
181	Quercus virginiana / Live Oak	OK	Routine maintenance
182	Quercus virginiana / Live Oak	OK	Routine maintenance
183	Quercus virginiana / Live Oak	OK	Routine maintenance
184	Quercus virginiana / Live Oak	OK	Routine maintenance
185	Quercus virginiana / Live Oak	OK	Routine maintenance
186	Quercus virginiana / Live Oak	OK	Routine maintenance
187	Quercus virginiana / Live Oak	OK	Routine maintenance
188	Quercus virginiana / Live Oak	OK	Routine maintenance
189	Quercus virginiana / Live Oak	OK	Routine maintenance
190	Quercus virginiana / Live Oak	OK	Routine maintenance
191	Quercus virginiana / Live Oak	OK	Routine maintenance
192	Quercus virginiana / Live Oak	OK	Routine maintenance
193	Quercus virginiana / Live Oak	OK	Routine maintenance
194	Quercus virginiana / Live Oak	OK	Routine maintenance
195	Quercus virginiana / Live Oak	OK	Routine maintenance
196	Quercus virginiana / Live Oak	OK	Routine maintenance
197	Quercus virginiana / Live Oak	OK	Routine maintenance
198	Quercus virginiana / Live Oak	OK	Routine maintenance
199	Quercus virginiana / Live Oak	OK	Routine maintenance
200	Quercus virginiana / Live Oak	OK	Routine maintenance
201	Quercus virginiana / Live Oak	OK	Routine maintenance
202	Quercus virginiana / Live Oak	OK	Routine maintenance
203	Quercus virginiana / Live Oak	OK	Routine maintenance
204	Quercus virginiana / Live Oak	OK	Routine maintenance
205	Quercus virginiana / Live Oak	OK	Routine maintenance
206	Quercus virginiana / Live Oak	OK	Routine maintenance
207	Quercus virginiana / Live Oak	OK	Routine maintenance
208	Quercus virginiana / Live Oak	OK	Routine maintenance
209	Quercus virginiana / Live Oak	OK	Routine maintenance
210	Quercus virginiana / Live Oak	OK	Routine maintenance
211	Quercus virginiana / Live Oak	OK	Routine maintenance
212	Quercus virginiana / Live Oak	OK	Routine maintenance
213	Quercus virginiana / Live Oak	OK	Routine maintenance
214	Quercus virginiana / Live Oak	OK	Routine maintenance
215	Quercus virginiana / Live Oak	OK	Routine maintenance
216	Quercus virginiana / Live Oak	OK	Routine maintenance
217	Quercus virginiana / Live Oak	OK	Routine maintenance
218	Quercus virginiana / Live Oak	OK	Routine maintenance
219	Quercus virginiana / Live Oak	OK	Routine maintenance
220	Quercus virginiana / Live Oak	OK	Routine maintenance
221	Quercus virginiana / Live Oak	OK	Routine maintenance
222	Quercus virginiana / Live Oak	OK	Routine maintenance
223	Quercus virginiana / Live Oak	OK	Routine maintenance
224	Quercus virginiana / Live Oak	OK	Routine maintenance
225	Quercus virginiana / Live Oak	OK	Routine maintenance
226	Quercus virginiana / Live Oak	OK	Routine maintenance
227	Quercus virginiana / Live Oak	OK	Routine maintenance
228	Quercus virginiana / Live Oak	OK	Routine maintenance
229	Quercus virginiana / Live Oak	OK	Routine maintenance
230	Quercus virginiana / Live Oak	OK	Routine maintenance
231	Quercus virginiana / Live Oak	OK	Routine maintenance
232	Quercus virginiana / Live Oak	OK	Routine maintenance
233	Quercus virginiana / Live Oak	OK	Routine maintenance
234	Quercus virginiana / Live Oak	OK	Routine maintenance
235	Quercus virginiana / Live Oak	OK	Routine maintenance
236	Quercus virginiana / Live Oak	OK	Routine maintenance
237	Quercus virginiana / Live Oak	OK	Routine maintenance
238	Quercus virginiana / Live Oak	OK	Routine maintenance
239	Quercus virginiana / Live Oak	OK	Routine maintenance
240	Quercus virginiana / Live Oak	OK	Routine maintenance
241	Quercus virginiana / Live Oak	OK	Routine maintenance
242	Quercus virginiana / Live Oak	OK	Routine maintenance
243	Quercus virginiana / Live Oak	OK	Routine maintenance
244	Quercus virginiana / Live Oak	OK	Routine maintenance
245	Quercus virginiana / Live Oak	OK	Routine maintenance
246	Quercus virginiana / Live Oak	OK	Routine maintenance
247	Quercus virginiana / Live Oak	OK	Routine maintenance
248	Quercus virginiana / Live Oak	OK	Routine maintenance
249	Quercus virginiana / Live Oak	OK	Routine maintenance
250	Quercus virginiana / Live Oak	OK	Routine maintenance
251	Quercus virginiana / Live Oak	OK	Routine maintenance
252	Quercus virginiana / Live Oak	OK	Routine maintenance
253	Quercus virginiana / Live Oak	OK	Routine maintenance
254	Quercus virginiana / Live Oak	OK	Routine maintenance
255	Quercus virginiana / Live Oak	OK	Routine maintenance
256	Quercus virginiana / Live Oak	OK	Routine maintenance
257	Quercus virginiana / Live Oak	OK	Routine maintenance
258	Quercus virginiana / Live Oak	OK	Routine maintenance
259	Quercus virginiana / Live Oak	OK	Routine maintenance
260	Quercus virginiana / Live Oak	OK	Routine maintenance
261	Quercus virginiana / Live Oak	OK	Routine maintenance
262	Quercus virginiana / Live Oak	OK	Routine maintenance
263	Quercus virginiana / Live Oak	OK	Routine maintenance
264	Quercus virginiana / Live Oak	OK	Routine maintenance
265	Quercus virginiana / Live Oak	OK	Routine maintenance
266	Quercus virginiana / Live Oak	OK	Routine maintenance
267	Quercus virginiana / Live Oak	OK	Routine maintenance
268	Quercus virginiana / Live Oak	OK	Routine maintenance
269	Quercus virginiana / Live Oak	OK	Routine maintenance
270	Quercus virginiana / Live Oak	OK	Routine maintenance
271	Quercus virginiana / Live Oak	OK	Routine maintenance
272	Quercus virginiana / Live Oak	OK	Routine maintenance
273	Quercus virginiana / Live Oak	OK	Routine maintenance
274	Quercus virginiana / Live Oak	OK	Routine maintenance
275	Quercus virginiana / Live Oak	OK	Routine maintenance
276	Quercus virginiana / Live Oak	OK	Routine maintenance
277	Quercus virginiana / Live Oak	OK	Routine maintenance
278	Quercus virginiana / Live Oak	OK	Routine maintenance
279	Quercus virginiana / Live Oak	OK	Routine maintenance
280	Quercus virginiana / Live Oak	OK	Routine maintenance
281	Quercus virginiana / Live Oak	OK	Routine maintenance
282	Quercus virginiana / Live Oak	OK	Routine maintenance
283	Quercus virginiana / Live Oak	OK	Routine maintenance
284	Quercus virginiana / Live Oak	OK	Routine maintenance
285	Quercus virginiana / Live Oak	OK	Routine maintenance
286	Quercus virginiana / Live Oak	OK	Routine maintenance
287	Quercus virginiana / Live Oak	OK	Routine maintenance
288	Quercus virginiana / Live Oak	OK	Routine maintenance
289	Quercus virginiana / Live Oak	OK	Routine maintenance
290	Quercus virginiana / Live Oak	OK	Routine maintenance
291	Quercus virginiana / Live Oak	OK	Routine maintenance
292	Quercus virginiana / Live Oak	OK	Routine maintenance
293	Quercus virginiana / Live Oak	OK	Routine maintenance
294	Quercus virginiana / Live Oak	OK	Routine maintenance
295	Quercus virginiana / Live Oak	OK	Routine maintenance
296	Quercus virginiana / Live Oak	OK	Routine maintenance
297	Quercus virginiana / Live Oak	OK	Routine maintenance
298	Quercus virginiana / Live Oak	OK	Routine maintenance
299	Quercus virginiana / Live Oak	OK	Routine maintenance
300	Quercus virginiana / Live Oak	OK	Routine maintenance

Additional Notes
* Consider removal of every other tree due to overcrowding, allowing adjacent trees sufficient room to grow.



Existing Plant Key

- CV = Callitriche ornata / Butterbush
- BU = Bursera simarouba / Gumbo Limbo
- LI = Ligustrum lucidum / Tree Myrtle
- LI = Ligustrum japonicum / Glossy Privet Standard
- OL = Quercus laevis / Laurel Oak
- OV = Quercus virginiana / Live Oak
- RI = Ruscus aculeatus / Rosemary
- SR = Sabal palmetto / Cabbage Palm
- SP = Sparganium angustifolium / Quatern Palm
- MG = Magnolia grandifolia / Southern Magnolia

Symbol Key

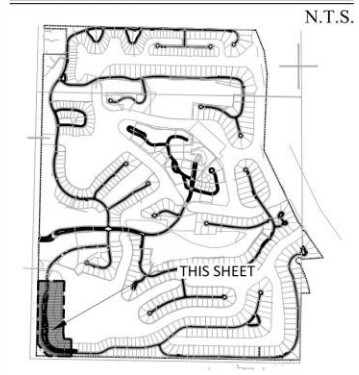
- BP = Back Flow Preventer
- RT = Telephone Rise Box
- C = Catch Basin
- CD = Sewer Clean Out
- CTV = Cable TV Rise Box
- CV = Control Valve
- EV = Electric Rise Box
- FR = Fire Hydrant
- FPL = FPL Transformer
- LP = Light Pole
- MB = Manhole
- MR = Manhole Rise Box
- WR = Water Meter
- WV = Water Valve
- WUT = Utility Box

Plant Symbol Key

- Existing tree/plant to remain
- Existing tree/plant removed since 2013 approval and re-plant
- Existing tree/plant removed by others that part of proposed lot
- Existing tree/plant to be relocated on site
- Existing tree/plant to be removed
- Proposed Tree
- Proposed Plant

Photo Station

Site Location Map



TOWN OF
JUPITER

Admiral's Cove Street Tree Plan



Photo 1: Looking south



Photo 2: Looking south



Gentile Glas Holloway O'Mahoney & Associates, Inc.
Landscape Architects
Planners and Environmental Consultants

1907 Commerce Lane
Suite 101
Jupiter, Florida 33458
561-575-9537
561-575-5260 FAX
www.2gho.com

Cambridge at Abacoa Jupiter, Florida

Designed: MTH/BRD
Drawn: MTH/BRD
Approved: GCG/MTH/BRD
Date: 10/15/19
Job no.
Revisions: 01/13/21
08/04/21

Cad no. CAD0

LC 000177

Sheet Title: Common Area Tree Removal/Replacement Plan

Scale: 1" = 50'

Sheet No.

Key Map



Tree Legend

- R Re Trees To Be Replaced With Same Species Or Otherwise Noted Typ.
- Existing Live Oak To Remain Typ.
- Existing Live Oak To Be Removed Typ.
- Existing Holly To Be Removed Typ.
- Existing Southern Magnolia To Remain Typ.
- Existing Southern Magnolia To Be Replaced Typ.
- Existing Southern Magnolia To Remain Typ.
- Existing Candler To Remain Typ.
- Existing Candler To Be Removed & Replaced Typ.
- Existing Candler To Be Removed Typ.
- Existing Ligustrum To Remain Typ.
- Existing Jatropha To Remain Typ.
- Existing Roystonea To Remain Typ.
- Existing Greenway Vegetation Overhang Typ.
- Proposed Southern Slak Pine To Remain Typ.
- Proposed Sabal Palm To Remain Typ.

Town of Jupiter Notes

- PROVIDE AN ANNUAL REPORT TO THE TOWN OF JUPITER THAT DETAILS WHICH TREES WERE REMOVED AND PROVIDES REPLACEMENT DATA.
- WHEN TREES ARE REMOVED, REPLACEMENTS MUST BE PLANTED WITHIN 60 DAYS OF REMOVAL.
- NOTIFICATION IS REQUIRED TO PROVIDE THE TOWN OF JUPITER UTILITIES DEPT. FOR ANY SUB-SURFACE WORK GREATER THAN 24".
- ROOTS MUST BE CUT AT THE EDGE OF THE SIDEWALK TO PREVENT GROWTH OF ROOTS UNDER THE SIDEWALK. ROOT BARRIER MUST BE INSTALLED NEXT TO SIDEWALK.
- REMOVALS AND REPLACEMENTS SHALL BE COMPLETED IN PHASES TO AVOID THE EFFECTS OF A MASSIVE, ONE TIME REMOVAL THAT DRAMATICALLY ALTERS THE APPEARANCE AND CHARACTER OF THE NEIGHBORHOOD. FOR EXAMPLE, THE NEIGHBORHOOD MUST BE DIVIDED INTO SECTORS AND WORK IN EACH SECTOR MUST BE COMPLETED (REMOVALS AND REPLACEMENTS) PRIOR TO MOVING TO THE NEXT SECTOR. WHEN TREES IN A SPECIFIC SECTOR ARE REMOVED THEY MUST BE REPLACED WITHIN 60 DAYS BEFORE TREES WITHIN THE NEXT SECTOR CAN BE REMOVED.
- FOR ANNUAL PHASES OF REMOVALS AND REPLACEMENTS SHOULD BE IN PLACE WITH REGARDS TO THE TREE REMOVALS IN YARDS AND COMMON AREAS THEY WOULD NEED TO WORK IN QUADRANTS AND CANNOT REMOVE ALL OF THE MARKED TREES IN ONE QUADRANT. REPLACE THEM ACCORDING TO THE PLANTS BUT WOULD HAVE TO WAIT UNTIL THE FOLLOWING YEAR TO DO THE NEXT QUADRANT, AND SO ON.
- ANY CURB OR SIDEWALK OR ROADWAY PAVEMENT THAT IS UNDERMINED OR DAMAGED DURING CONSTRUCTION EFFORTS SHALL BE REMOVED AND REPLACED IN ACCORDANCE WITH THE CURRENT TOWN OF JUPITER ENGINEERING DIVISION STANDARDS AND DETAILS. THE PROJECT SHALL BE RESPONSIBLE FOR ALL DAMAGE UNLESS PRE-WORK INSPECTION IDENTIFIES DAMAGE AND THE TOWN OF JUPITER ENGINEERING DIVISION IS NOTIFIED AND CONCURS WITH THE PRE-EXISTING DAMAGE CONDITION PRIOR TO ANY WORK WITHIN VICINITY OF THE DAMAGE.
- INASMUCH AS STUMPS AND ROOTS FROM REMOVED TREES WILL BE LEFT IN PLACE BELOW A DEPTH OF 6", THE H.O.A. SHALL BE THE PERPETUAL RESPONSIBILITY FOR FUTURE CURB, SIDEWALK OR PAVEMENT REPAIRS THAT MAY BE NEEDED THAT ARE DETERMINED TO BE CAUSED OR ATTRIBUTED TO THE DECAY OR DEGRADATION OF ROOT MASSES.
- ANY SIGNS, STREET LIGHTING AND RELATED UNDERGROUND POWER, MAIL BOXES, OR SIMILAR EXISTING IMPROVEMENTS WITHIN THE WORK AREAS SHALL BE FULLY REPAIRED, REPLACED, REINSTALLED, AND RESTORED.
- MAJORITY OF WORK IS WITHIN PUBLIC ROAD RIGHT OF WAY AND AS SUCH, AN ENGINEERING PERMIT SHALL BE APPLIED FOR OBTAINED PRIOR TO ANY WORK BEGINNING. THE PERMIT APPLICATION SHALL INCLUDE A M.O.T. PLAN / DETAILS FOR THE PLANNED NETWORK TO ENSURE PUBLIC SAFETY IS ADDRESSED.
- NEW TREES SHALL BE LOCATED TO AVOID UNDERGROUND WATER UTILITIES. PROVIDE AN OVERLAY CONFIRMING THAT PROPER SEPARATION IS MAINTAINED TYPICAL.
- ROOTS MUST BE CUT AT THE EDGE OF THE SIDEWALK TO PREVENT GROWTH UNDER SIDEWALK. ROOT BARRIER MUST BE INSTALLED NEXT TO SIDEWALK.

Notes

- ALL EXISTING VEGETATION TO REMAIN ON SITE SHALL NOT BE IMPACTED UNLESS NOTED ON PLANS AND NO OTHER LANDSCAPE CHANGES SHALL OCCUR.
- TREES - ALL TREES, STUMPS AND ROOTS SHALL BE COMPLETELY REMOVED TO 6" BELOW GRADE AND DISPOSED OF IN 2 TROPES AWAY FROM THE SITE. SOME ROOT PRUNING MAY BE REQUIRED AND HAND DIGGING TO AVOID ANY UTILITY CONFLICTS AND IF A TREE IS PROPOSED WHERE ONE IS EXISTING SHALL COMPLETELY REMOVE EVERYTHING BELOW GRADE TO PLANT NEW VEGETATION.
- ALL MEASURES SHALL BE TAKEN TO ASSURE MINIMAL DAMAGE TO EXISTING DRIVEWAYS, WALKWAYS, LIGHTS, BUILDINGS AND ANY OTHER UNDERGROUND UTILITIES. CONTRACTOR WILL BE RESPONSIBLE FOR DAMAGES FROM IMPROPER WORK PRACTICES.
- ROOT PRUNING - SOME MINOR ROOT PRUNING MAY NEED TO OCCUR WHERE A TREE IS PROPOSED TO BE REMOVED AND IS NEAR TO ANOTHER TREE TO REMAIN. THIS MAY REQUIRE THE EXISTING TREE TO RECEIVE SOME MINOR ROOT PRUNING.
- STAKING - ALL TREES BEING ROOT PRUNED OF ANY TYPE SHALL RECEIVE STAKING.
- PROPOSED REPLACEMENT / INFILL VEGETATION - ALL PROPOSED VEGETATION SHALL BE COORDINATED WITH THE H.O.A. AND IN FACT FOR ANY PLANTINGS OCCURRING WITHIN THE GREENWAY. ALL PROPOSED PLANTING SHALL BE PLACED SO THAT IT CREATES A NATURAL LAYOUT AND DOES NOT AFFECT EXISTING VEGETATION IN ANY FASHION. ALL MEASURES SHALL BE TAKEN TO CREATE MINIMAL DISTURBANCE.
- IRRIGATION - ALL PROPOSED VEGETATION SHALL RECEIVE ROOF IRRIGATION COVERAGE TO ESTABLISH PLANTINGS. ANY IRRIGATION WITHIN GREENWAY WILL BE TEMPORARY TO ESTABLISH PLANTINGS. ANY DAMAGED IRRIGATION DURING CONSTRUCTION SHALL BE FIXED AND IDENTIFIED TO THE H.O.A. & SITE MANAGEMENT COMPANY.
- SOIL - ALL SOIL AREAS DAMAGED DURING REMOVAL OF TREES SHALL BE REPLACED AS NEEDED TO ASSURE SOO COVERAGE AND NO BARE GROUND. SOO COVERAGES SHALL BE PROVIDED TO POST REED AREAS.
- UTILITIES - RFI SHALL BE UTILIZED TO IDENTIFY ANY POTENTIAL UNDERGROUND CONFLICTS.

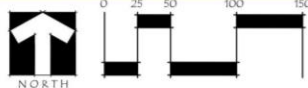


Photo Station



Know what's below.
Call before you dig.

APPROVED
Town of Jupiter
Natural Resources
10/18/2021



TOWN OF
JUPITER

Cambridge Street Tree Plan



Photo 1: Looking south

11/25/2024



Photo 1: Looking south

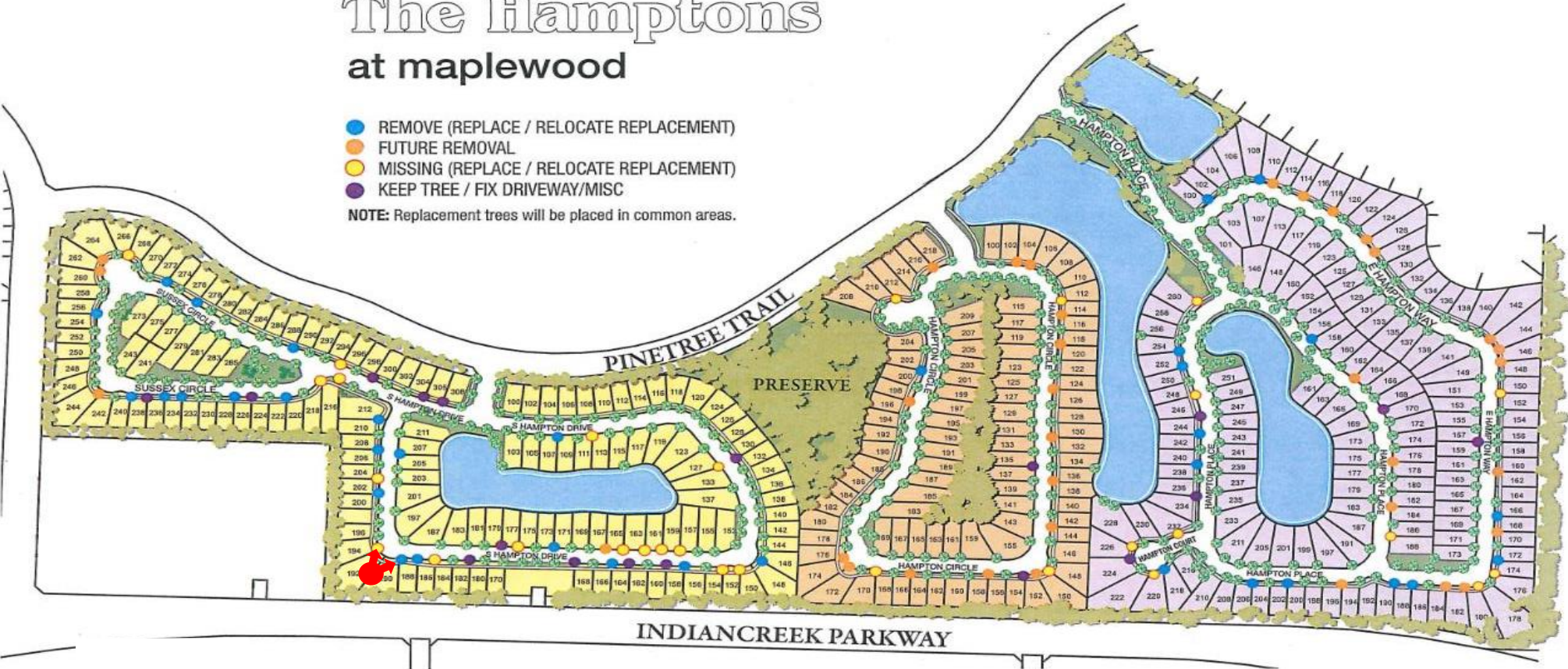
The Hamptons at maplewood

- REMOVE (REPLACE / RELOCATE REPLACEMENT)
- FUTURE REMOVAL
- MISSING (REPLACE / RELOCATE REPLACEMENT)
- KEEP TREE / FIX DRIVEWAY/MISC

NOTE: Replacement trees will be placed in common areas.



Photo Station



PHASE I

PHASE II

PHASE III



The Hamptons Street Tree Plan



Street Trees Management Plan- Questions?

Barrett Cruce

Natural Resources Supervisor

ISA Certification #FL 9335A

barrettc@jupiter.fl.us

561-741-2523

Ashley Reeves

Natural Resources Coordinator

ashleyr@jupiter.fl.us

561- 741-2384

Natural Environment Centennial Committee

Sponsorship/Volunteer Needs

Program: Natural Environment/History Presentations & Panels

- Tuesday February 25, 2025 – “Jupiter’s Natural History” presentation
 - \$250 for refreshments
 - Need reception sponsors
 - Need ETF representation (attend event)
- Wednesday March 19, 2025 – “Preserving Paradise” panel
 - Sponsor: 2GHO
 - Need ETF representation (attend event)
- TBA November 2025 – “Life on Jupiter Waters” panel
 - \$250 for refreshments
 - Need potential panelists – do you know anyone?
 - Need reception sponsor
 - Need ETF representation (attend event)

Program: Beach Cleanup – Saturday March 1, 2025

- Need ETF representation at sponsorship tent (attend event, work sponsorship tent, brief ETF overview)

Program: Arbor Day Celebration / Tree Giveaway – Saturday May 17, 2025

- \$2,850 for event materials (pots, shirts for JCHS kids, lunch)
- Need event sponsor (FPL?)
- Need lunch sponsor for JCHS kids
- Need ETF representation (attend event, work TOJ tent, brief ETF overview)

Program: Paddleboard Tour & Waterway Cleanup – Friday October 24, 2025

- \$5,000 for event materials (paddleboard/kayak rentals, refreshments)
- Need event sponsor
- Need ETF volunteers (attend event, hosts on land w/ refreshments & tour guides in water)